

ARCHAEOLOGY IN SUFFOLK 2018

*compiled by FAYE MINTER, JAMES ROLFE and ALICE SAUNDERS with
object drawings by DONNA WREATHALL*

THIS IS A selection of the new discoveries reported in 2018. Information on these has been incorporated into the Suffolk Historic Environment Record (formerly the Sites and Monuments Record), which is maintained by the Archaeological Service of Suffolk County Council at Bury St. Edmunds. Where available, the Record number is quoted at the beginning of each entry. The Suffolk Historic Environment Record is now partially accessible online via the Suffolk Heritage Explorer web pages (<https://heritage.suffolk.gov.uk/>). Many of the excavation/evaluation reports are also available online via the Archaeological Data Service (<http://archaeologydataservice.ac.uk/archives/view/greylit/>).

Most of the finds are recorded through the national Portable Antiquities Scheme, the Suffolk part of which is also based in the Archaeological Service of Suffolk County Council. Further details and images of many of the finds can be found on the Scheme's website (<http://finds.org.uk/database>) and for many of the finds listed here the PAS reference number is included in the text. During 2018 the PAS finds in Suffolk were recorded by Alex Bliss, Anna Booth, Riccardo Caravello and Faye Minter. Following requests from metal detector users, we have removed all grid references from entries concerning finds reported by them.

We continue to be grateful to all those who contribute information for this annual list.

Abbreviations:

Mdf	Metal detector find		
PAS	Portable Antiquities Scheme (see above). The Suffolk contact for this national scheme is Anna Booth (tel. 01284 741241; e-mail anna.booth@suffolk.gov.uk).		
SCCAS	Suffolk County Council Archaeological Service, Bury Resource Centre, Hollow Road, Bury St Edmunds, IP32 7AY (tel. 01284 741230; e-mail archaeology@suffolk.gov.uk)		
SHER	Suffolk Historic Environment Record (see above)		

Pa	Palaeolithic	Ro	Roman
Me	Mesolithic	Sx	Saxon
Ne	Neolithic	Md	Medieval
BA	Bronze Age	PM	Post-Medieval
IA	Iron Age	Un	Period unknown
Pr	Prehistoric		

INDIVIDUAL FINDS AND DISCOVERIES

Akenham (AKE 080). **IA**. Gold uninscribed north Thames/Trinovantian *stater*. 'Early Clacton' (British G) Type. BMC no.145-79 (SF-4AEAD3). (Mdf).

Aldringham cum Thorpe (ARG 112). **Sx**. Silver cut halfpenny of Harold II (Godwinson) c.AD 1066 (SF-A25C55). (Mdf).

Assington (ASN 039). **Ro**. Copper-alloy and enamel strap or belt fitting (SF-DF24CE) (Fig. 169 D), greyware (SF-DE799F) and ceramic building material (SF-DE3AE4). (Mdf).

Bardwell (BAR 129). **IA**. Copper-alloy unidentified object in the form of a boar's head (SF-5A50AE) (Fig. 168). (Mdf).

Barnham (BNH 167). **BA**. Copper-alloy dirk of Burgess and Gerloff's group II, 'dirks with damaged or ill-formed blades modified for rehafting' (SF-E9C52D). (Mdf).

Bedfield (BED 040). **Sx**. Copper-alloy balance (SF-A58107), small-long brooch (SF-A64E88) and Anglo-Scandinavian harness fitting (SF-A4F907). (Mdf).

Bradfield St Clare (BSC 036). **IA**. Silver Icenian, Talbot's Large Flan A series (SF-67D8EF). (Mdf).

Bradfield St Clare (BSC 037). **BA**. Copper-alloy flat axe (SF-5574CA). (Mdf).

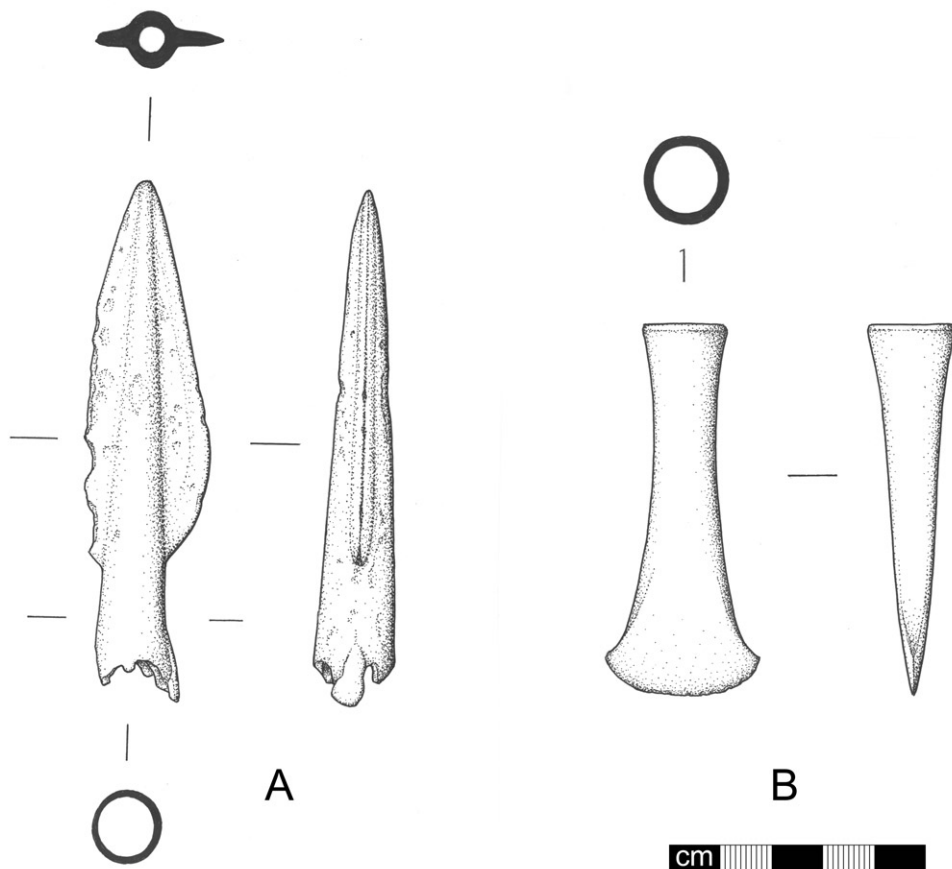
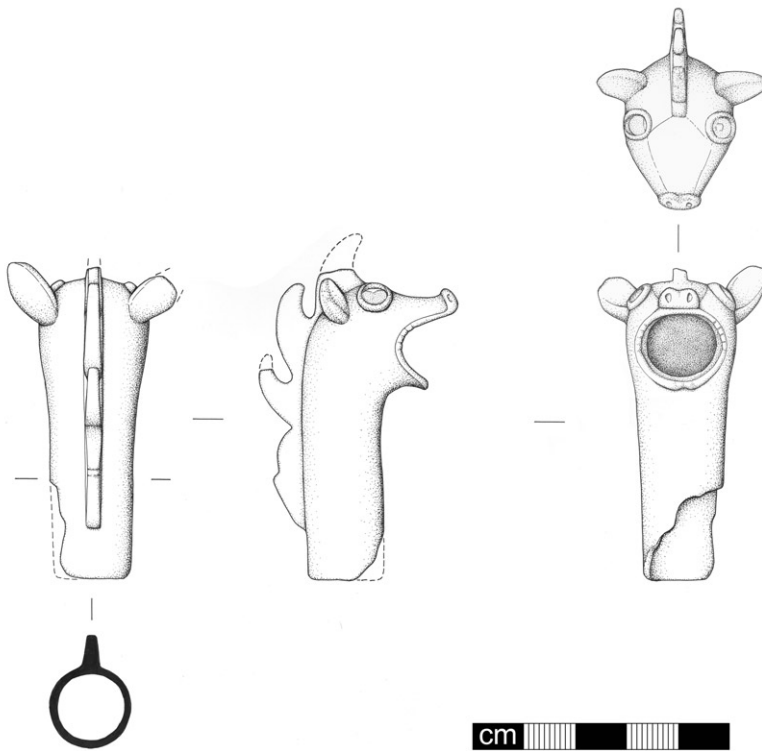


FIG. 167 – Bronze Age copper-alloy socketed spearhead from Playford (A) and copper-alloy socketed chisel from Beck Row, Mildenhall (B).



168 – Iron Age copper-alloy object in the form of a boar's head from Bardwell.

Bradfield St George (BSG 039). **Md.** Silver coins of Henry II and Henry III (SF-C09AB2 and SF-C07A64), two lead pilgrim's badges, both depicting the bust of a bishop, possibly Thomas Beckett, which may have come from the same mould (SF-550A95 and SF-54EB64). Lead *ampulla* probably from Walsingham (SF-54333E). (Mdf).

Bramford (BRF 161). **Sx.** Copper-alloy small-long brooch (SF-F6895B) and wrist clasp half (PUBLIC-75B36B). (Mdf).

Brantham (BNT 074). **BA.** Copper-alloy hoard consisting of 16 incomplete socketed axes and 13 fragments of cake ingot (SF-B2FFD2). (Mdf).

Brockley (BKY 045). **Sx.** Copper-alloy strap-end (SF-DB7809) (Fig. 170 A). (Mdf).

Brockley (BKY 046). **IA.** Inscribed gold *stater* of Cunobelin, Rudd's 'Cunobelinus Linear' type (SF-B71685). (Mdf).

Combs (COM 066). **IA, Ro.** Copper-alloy enamelled strap fitting (SF-B63CBB) (Fig. 169 A). (Mdf).

Cookley (COY 024). **Ro.** A hoard of 60 silver *denarii* dating from 153 BC to AD 60–1 (SF-FF2FDE). (Mdf).

Darsham (DAR 049). **Sx.** Pale gold Anglo-Saxon *thrymsa* (SF-421DCA). (Mdf).

Debenham (DBN 206). **Greek.** Copper-alloy Greek coin, probably the core of a plated contemporary copy of an Athenian *tetradrachm*, possibly dating to the c.2nd–1st centuries BC (SF-72D235). (Mdf).

Exning (EXG 051). **IA.** Gold uninscribed quarter *stater* of the Eastern region, ABC 2353 (SF-448331). (Mdf).

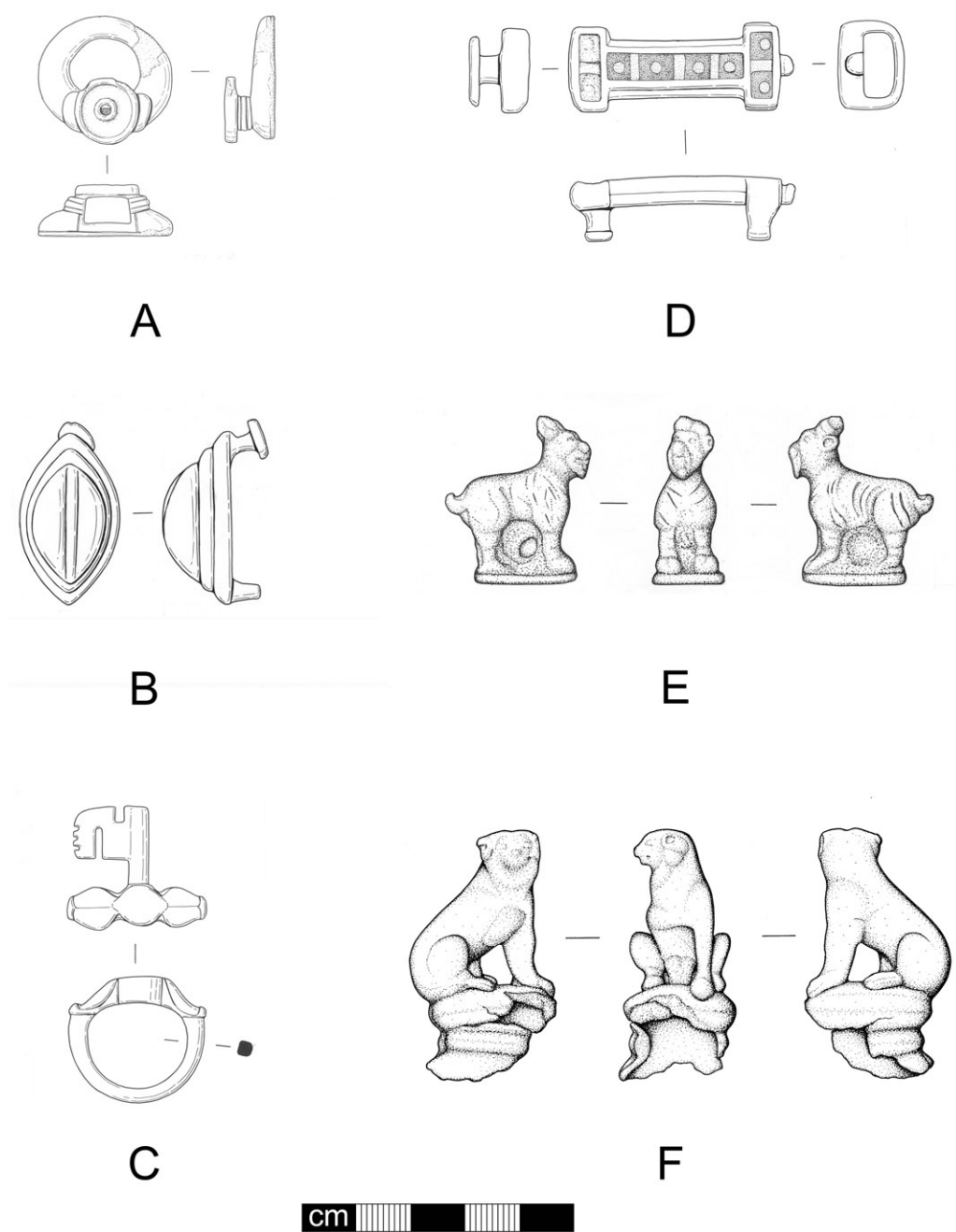


FIG. 169 – Iron Age or Roman copper-alloy enamelled strap fitting from Combs (A); Roman copper-alloy vulvate stud from Hopton (B); copper-alloy key finger ring from Newmarket (C); copper-alloy and enamel strap fitting from Assington (D); copper-alloy goat figurine from Wilby (E); copper-alloy figurine in the form of a seated lion from Pakenham (F).

Felixstowe (FEX 424). **Sx**. Hoard of eight silver pennies of Aethelred II minted between 997 and 1009 (SF-D0FB2A). (Mdf during development archaeological investigations).

Felixstowe (FEX 425). **PM**. Gold and enamel *memento mori* finger ring engraved with a facing grinning skull and Latin inscription 'RES/PIC/E FI/NEM (RESPICE FINEM)'. This translates broadly as 'think to the end, an allusion to the inevitability of death (SF-9977A7) (Fig. 171). (Mdf).

Fressingfield (FSF 101). **Ro, Sx**. Copper-alloy bow brooch of Nauheim Derivative (SF-BE1CF2), Roman 1st to 4th century coinage, including a silver *denarius* of Vespasian (SF-BCAA10) and Nero (SF-BCE7D0), copper-alloy continental plate brooch (SF-581208), bow brooches, pendant, possibly of military origin (SF-57A784), figurine of Mercury (SF-41790E) and silver finger ring (SF-CD4E41). Saxon cruciform brooch (SF-6E8DE5) and small-long brooch (SF-6ED133). (Mdf).

Hartest (HRT 045). **IA**. Copper-alloy toggle (SF-F56BE9). (Mdf).

Hemingstone (HMG 046). **IA**. Gold uninscribed quarter *stater* of the Eastern region, dating c.50–20 BC. ABC 2243 (SF-2DD852). (Mdf).

Hessett (HTT 042). **IA, Sx, Md**. Copper-alloy lynch pin (SF-FF5ABC), Late Saxon copper-alloy strap-end (SF-FC9739), lead oval seal matrix inscribed with '+S' ISABELLE .FIL. WILEMI [Seal of Isabelle daughter of William] (SF-FDF178), coinage Edward I to Henry VII. (Mdf).

Hopton (HPN 037). **IA, Ro**. Icenian silver unit. cf. ABC no. 1681 (SF-1098D6), 1st to 4th century coinage, ceramic building material, copper-alloy seal box lid (SF-502EF1), *amphora*-shaped pendant (SF-50B3AA), strap-end (SF-2261C8), bracelet (SF-33D406), enamelled stud (SF-3358D7), vulvate stud (SF-E650F9) (Fig. 169 B) and plate and bow brooches.

Hopton (HPN 038). **Sx**. Lead strap-end Thomas Class E (SF-71432C) (Fig. 170 B). (Mdf).

Horringer (HGR 044). **IA**. Gold quarter *stater* of the Eastern region (attributed to Addedomarus) ABC 2529 (SF-C9EDC5). (Mdf).

Knodishall (KND 030). **Ro**. Copper-alloy figurine of Minerva (SF-321621), hairpin (SF-30EF6B), 2nd to 4th century coins. (Mdf).

Lavenham (LVM 153). **IA**. Copper-alloy unit of the North Thames region, ABC no. 2315 (SF-6A72E9). (Mdf).

Lavenham (LVM 154). **Sx**. Copper-alloy pin (SF-CA06F4) (Fig. 170 G), strap-end (SF-C9F59B) (Fig. 170 F) and stirrup strap mount (SF-695C19). (Mdf).

Mildenhall (MNL 1055). **Sx**. A double-pierced silver half-*siliqua* of Justinian I, c.AD 552–565 (SF-80689D). (Mdf).

Mildenhall (MNL 1056). **BA, IA, Sx**. Copper-alloy socketed chisel (SF-F59C95) (Fig. 167 B), Silver Icenian Unit ABC no. 1678 (SF-7756FB). Silver *sceatta* of Series F (SF-38752D). (Mdf).

Monks Eleigh (MKE 050). **Md**. Lead-alloy personal seal matrix inscribed '+S' RIC' LE TORNIO [Seal of Richard/Ricard Le Torno/Tornour]. An individual named 'Ricardo Le Tornour' is listed in the Suffolk subsidy returns for 1327, living in nearby Aldham (PUBLIC-B0C5BD). (Mdf).

Newmarket (NKT 086). **IA, Ro**. Silver Icenian unit, face/horse type, ABC no. 1567 (SF-43A6FA), copper-alloy Roman key finger ring (SF-4403D2) (Fig. 169 C) and 4th century coinage. (Mdf).

North Cove (NHC 025). **Md**. Gold quarter noble of Edward III dating 1363–69 (NMS-CE9491) and gold finger ring (NMS-7A5CA5). (Mdf).

Norton (NRN 048). **Ro, Sx**. Roman coins 3rd to 4th century, Saxon copper-alloy wrist clasps (SF-6B381D, SF-21E5D5 and SF-6B3533), cruciform brooches (SF-6B4808 and SF-6B4315), small-long brooches (SF-6B3C16 and SF-6B2DD0), equal-armed brooch (SF-6B3EE8), linked pin (SF-3B0761) (Fig. 170 E), silver great square-headed brooches (SF-AC82B1 and SF-AC7542). (Mdf).

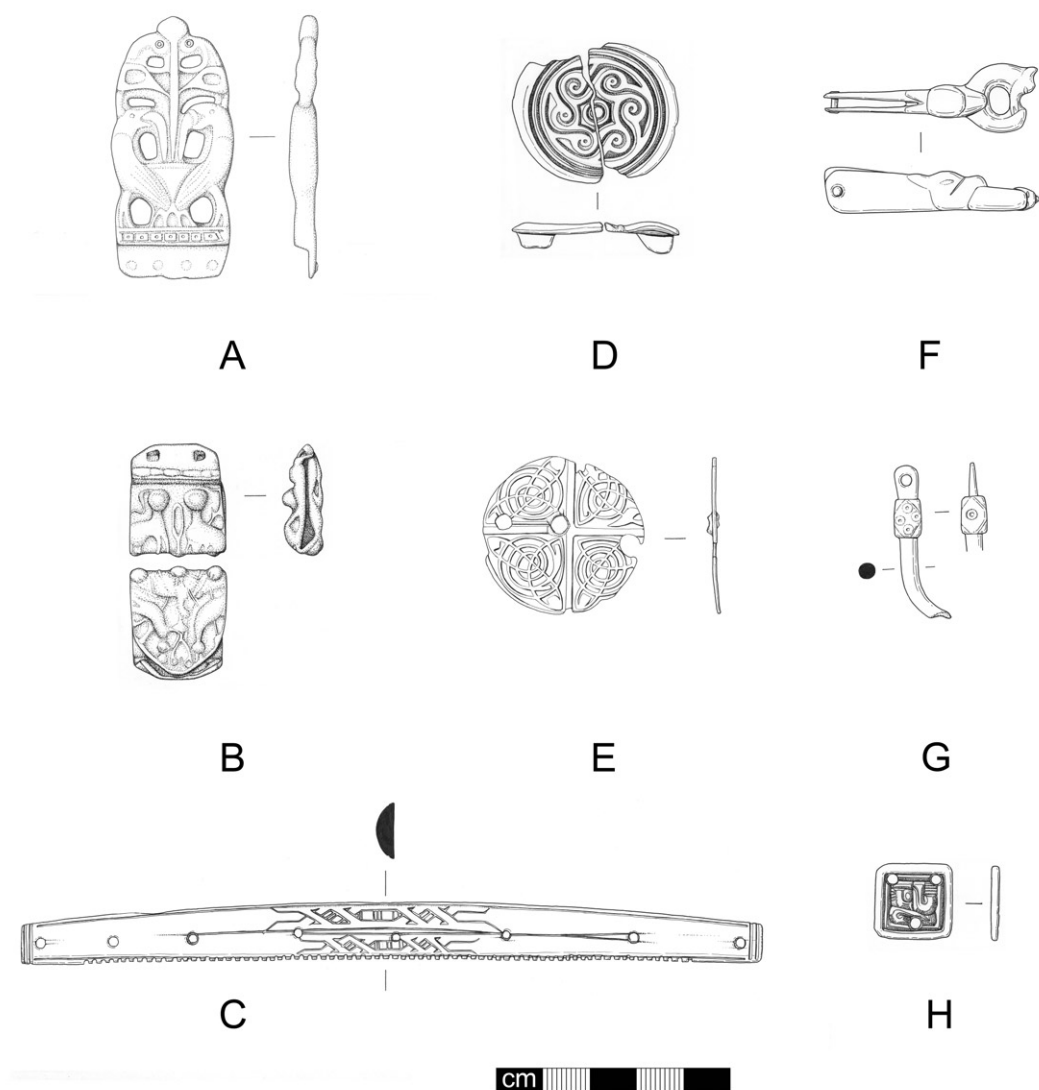


FIG. 170 – Saxon copper-alloy strap-end from Brockley (A); lead strap-end from Hopton (B); incomplete antler comb from Shotley (C); copper-alloy saucer brooch from Tostock (D); copper-alloy linked pin from Norton (E); copper-alloy strap-end from Lavenham (F); copper-alloy pin from Lavenham (G); copper-alloy mount from Tostock (H).

Pakenham (PKM 105). **Ro, Sx.** Known villa site. 1st to 4th century coinage, copper-alloy figurine in the form of a seated lion (SF-C31DE7) (Fig. 169 F), silver-gilt vessel fragments (SF-415D0A), silver *sceattas* (SF-D39D4E and SF-6B25C4) and hooked tag (SF-D44C25). (Mdf).

Playford (PLY 065). **BA.** Copper-alloy socketed spearhead (SF-5A5BF1) (Fig. 167 A). (Mdf).

Polstead (PLS 074). **Md.** Coin hoard or purse loss consisting of eight silver coins: six English pennies of Henry III, one of Alexander II of Scotland, and a continental imitation of a Henry III penny (SF-A25A75). (Mdf).

Shotley (SLY 229). **Sx.** An incomplete antler comb of Scandinavian/'Viking' origin and composite construction, dating *c.* 800–900 AD (SF-F4B784) (Fig. 170 C). (Chance find).

Thelnetham (THE 047). **Md.** Silver personal seal matrix, the die is ornately engraved with the design of St Andrew on the cross, flanked each side by a single eight-pointed star and inscribed 'CRVX: ANDREE DIGNAO: FR ET PR [the worthy cross of St Andrew: brothers and priest]' (FR for Frater/Fratres, and PR perhaps an abbreviated form of 'Presbyter') (SF-89265D). (Mdf).

Tostock (TCK 021). **Sx.** Copper-alloy saucer brooch (SF-1A6E47) (Fig. 170 D) and mount (SF-2D50F7) (Fig. 170 H), gold ingot (SF-BB29DC) and pale gold *thrymsa* (SF-84A6C8). (Mdf).

Ufford (UFF 057). **Ro.** Copper-alloy zoomorphic hound brooch (SF-8CA12E), silver *siliqua* contemporary copy of a coin of Julian (AD 355–63) (SF-8B9BE3). (Mdf).

Wilby (WBY 034). **IA, Ro.** Silver Icenian unit Rudd's 'Bury Diadem' type, cf. ABC 1495 (SF-676C7B), silver Icenian unit of Talbot's Bury Large Flan A (LFA) series (SF-6271A5). Copper-alloy 1st to 4th century coinage, bow and plate brooches, goat figurine (SF-EF894D) (Fig. 169 E). (Mdf).

Woolpit (WPT 076). **IA.** Gold uninscribed *stater*, Norfolk Wolf type, ABC no. 1393 (SF-EBC830). (Mdf).



FIG. 171 – Post-medieval gold and enamel finger ring from Felixstowe.

SURVEYS

Blythburgh, Bulcamp (TM/4467; BLB 154). A magnetometry survey revealed an extensive ditch system which opens out from a possibly earlier D-shaped enclosure, probably to utilise the former river course as part of an enclosure boundary. N of the D-shaped enclosure looks to be an area of demolition or industrial activity while elsewhere are pits, possible post-holes and lesser regular and irregular ditches (Fig. 172). Investigations are ongoing.

John Rainer, Suffolk Archaeological Field Group.

Felixstowe, Holmhill (TM/3137; FEX 087). LiDAR analysis showed that Holmhill, a low summit close to the mouth of the river Deben, may once have been an island site. A magnetometry survey was undertaken to evaluate cropmarks previously identified on the higher ground and establish if more could be found. The results showed a ditched enclosure well away from the site of a demolished modern farmstead. However, magnetically noisy material had been ploughed out from the slopes, therefore the magnetometer survey showed very little in this area. A bowl-shaped depression was identified at the centre of the enclosure; this may once have been where material for road repairs was removed two generations ago, according to one local source.

John Rainer, Suffolk Archaeological Field Group.

Freston, Land off Latimer Field (TM/1637; FRT 060). A 10-day fieldwalking project was undertaken (by a team of two) off Latimer Field, due S of the Neolithic interrupted ditch

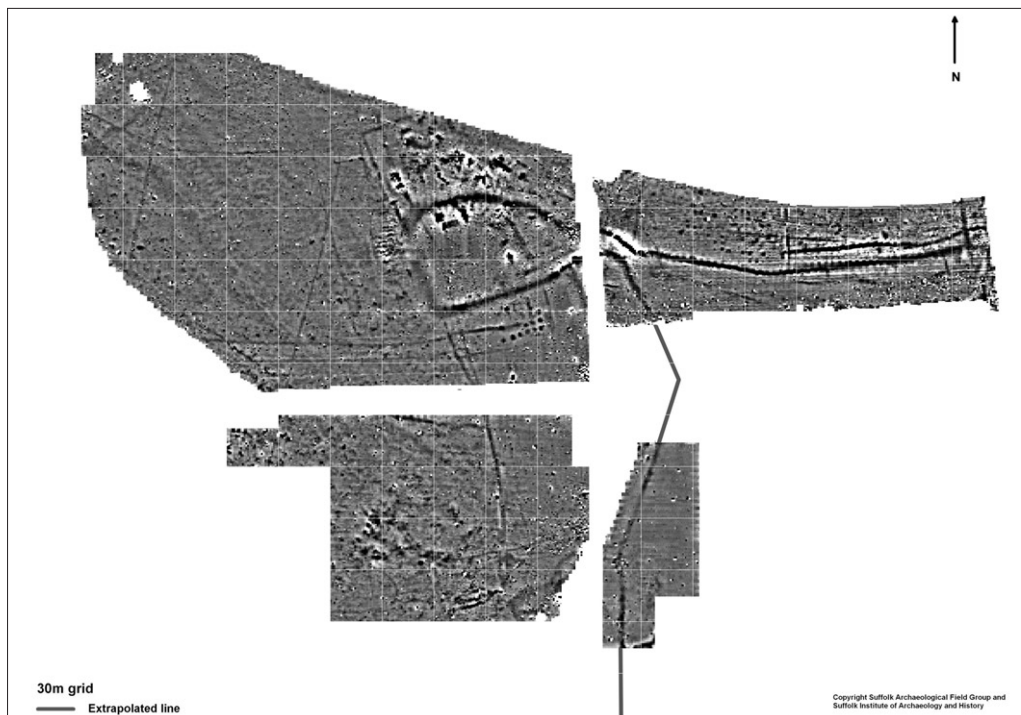


FIG. 172 – Blythburgh (BLB 154). The results of the magnetometer survey
(© *Suffolk Archaeological Field Group and Suffolk Institute of Archaeology and History*).

system (FRT 005). The aim of the project was to investigate related prehistoric activities. A small quantity of Neolithic flaked stone was recovered across the field, including a scraper and two denticulates; one D-shaped gunflint was also found, of likely 17th–18th-century date. The dominant finds were post-medieval glazed sherds, roof-tile and glass, whose even distribution across the field suggests strongly that they were introduced as a by-product of agricultural practices, specifically field manuring, rather than relating to local domestic activities.

Tristan Carter, McMaster University,
funded by an International Initiatives Micro Fund.

Reydon, Land N of Green Lane (TM/4978; REY 107). A magnetic gradiometer survey identified six positive linear anomalies of possible archaeological origin. Four of these appear to form part of an enclosure system which potentially has a relationship with an historical boundary. Two other linear anomalies were identified which are likely to represent cut and infilled ditch or gully features. A cluster of large positive anomalies may represent a group of large quarry pits.

Keeley-Jade Diggon, Dr John Summers and Dr David Bescoby,
Archaeological Solutions, for Artisan Planning and Property Services.

ARCHAEOLOGICAL EXCAVATIONS

Acton, Land N of Rectory House, Waldingfield Road (TM/8944; ACT 039). Archaeological monitoring during groundworks for a new access road and service trench revealed two ditches, one of possible late prehistoric date. The Roman road, which was believed to cross the site, was not seen; it may have been removed by the digging of a late 19th-century pond, or it may be located beyond the development site.

Mark Baister, Sarah Carter, Laura Pooley, Adam Wightman,
Colchester Archaeological Trust, for Mr and Mrs Hemsworth.

Aldringham, Aldeburgh Road (TM/4461; ARG 104). Evaluation of 1.5ha of arable field and an equestrian paddock E of Aldeburgh Road revealed two ditches and a pit of Early Iron Age date in the W of the site. A single medieval pit was present in the S-central part of the site. A single post-medieval ditch was identified. Most of the pits and ditches encountered on site were undated. A number of the ditches conformed to various parallel alignments, some perpendicular to one another, and may have constituted multiphase rectilinear field systems, most likely of medieval or earlier post-medieval date.

Craig Carvey, Archaeology South-East, for CgMs Consulting.

Barrow, Land E of Barrow Hill (TL/7663; BRR 060). Excavation of a 0.7ha area ahead of residential development found remains of 11th–14th-century settlement. A sequence of broadly rectilinear enclosures aligned along the route of Barrow Hill. As well as boundary ditches, a waterhole, pits and the foundations of at least three post-built timber structures were revealed. Four sub-periods in the development of the settlement could be identified. The quality of the pottery from the site and the scarcity of dress accessories or items of personal adornment suggested relatively low status, with the buildings perhaps being workshops or animal shelters on the periphery of the main village to the N of the site. Occupation ceased by the end of the 14th century and, by the late 16th century, the land was used for farming, having been divided into at least two ditch-defined fields. Roadside ditches bordering the lane leading S from the centre of Barrow (now Barrow Hill) extended along the W edge of the site. A 17th or early 18th-century iron padlock was recovered from one of these ditches. At least two ponds, one of which is shown on an early map of the site, were located by the side of the road to water livestock, draught animals and mounts.

Simon Carlyle and Judy Mlynarska,
Pre-Construct Archaeology, for CgMs Consulting on behalf of Hopkins Homes.

Blythburgh, (TM/4575; BLB 153). Twelve 1m² archaeological test pits were excavated in Blythburgh as part of the Independent Learning Archaeology Field School (ILAFS) programme. They were dug by Year 8 and 9 students from Pakefield High School, Benjamin Britten School, Bungay High School, Sir John Leman High School and Ormiston Denes Academy. Following excavations in 2017 in the village, the 2018 test pits mainly concentrated on the W side of the A12. The earliest pottery evidence dated to the Middle Anglo-Saxon period, approximately contemporary with the formation of the first church in Blythburgh. Evidence of later Anglo-Saxon pottery was seen in three of the test pits, showing that this part of the village was the focus of settlement at that time. The village expanded during the high medieval period across the S of the Anglo-Saxon church, which became an Augustinian Priory during the 12th century; a total of 90 pottery sherds of this date were excavated from eight of the test pits. It may have been the presence of the priory which enabled the settlement here to continue to flourish during the later medieval period despite the various socio-economic

factors that were affecting the entire population during the 14th century. Nine test pits yielded pottery of 14th–15th-century date.

Catherine Collins and Alison Dickens
Access Cambridge Archaeology, University of Cambridge.

Blythburgh, Bulcamp (TM/4476; BLB 154). Excavation was undertaken following previous geophysical survey and metal detecting which recovered 12th–15th-century finds. Consistent with these finds, the fill of a ditch forming the S boundary of a D-shaped enclosure contained a small quantity of medieval pottery, 13th–15th century, as well as several large pieces of very early brick, dated to c.13th century. The latter may potentially be related to the presence of a priory which was situated close to Blythburgh village. The same ditch fill also contained material of later date which seemed to suggest that the ditch may have been backfilled, possibly in the 17th or 18th centuries. The geophysics revealed a row of large possible post-pits; upon excavating one of the pits, the feature was identified as a shallow, oval pit, 2m wide, containing a quantity of 11th–14th-century pottery.

Lynda Bradley, Suffolk Archaeological Field Group.

Bramford, Land at Fitzgerald Road (TM/1246; BRF 158). Archaeological evaluation ahead of residential development identified three distinct focuses of activity. The S focus consisted of two Middle Bronze Age cremation burials; one within a Deverel-Rimbury urn (c.1700–1200 BC) (Fig. 173), the second un-urned. The cremations were cut into a colluvial deposit and may have been deliberately positioned near a watercourse or hollow. Part of a later prehistoric field system was also identified in this area. The NE focus contained boundaries and enclosures dating to the Late Saxon–early medieval period. Anomalies identified in an earlier geophysical survey, which appeared to be large boundary ditches, in fact related to multiple recuts of the same ditches. The E focus appeared to relate to Late Saxon–early medieval edge of settlement activity, with further ditched enclosures present; the limited finds assemblages suggested that the settlement core lay beyond the limits of the excavation to the E.

Matt Jones, Pre-Construct Archaeology,
for CgMs Consulting on behalf of Hopkins Homes.



FIG. 173 – Bramford (BRF 158). Excavation of Bronze Age cremation (© Pre-Construct Archaeology).

Brome and Oakley, A140, Eye Airfield Roundabout – N (TM/1376; BRM 134). An archaeological trial trench evaluation was carried out prior to the construction of a new roundabout and associated link roads. Fifteen trenches were excavated and revealed a single Late Iron Age/Romano-British ditch at the W of the site, close to the line of the A140, which contained a large assemblage of pottery. A medieval ditch and a post-medieval ditch were identified at the centre of the site along with several modern pits which are likely to relate to the site's function when it formed part of the WW2 airfield of Eye. Undated ditches were also identified in several trenches at the W and centre of the site.

Martin Cuthbert, Suffolk Archaeology CIC, for Suffolk Highways.

Bury St Edmunds, Suffolk Business Park, Rougham Site, Phase 1 (TL/8963; RGH 096). An evaluation identified a small assemblage of residual worked flints and several tree-throw holes, one of which produced worked flint. Iron Age or Roman agricultural ditches, as well as medieval and post-medieval ditches and pits, were also present.

Matt Nichol, Cotswold Archaeology.

Bury St Edmunds, Land W of Station Hill (TL/8565; BSE 659). Archaeological evaluation, consisting of nine trial trenches distributed across a c.1ha site, was carried out in advance of residential redevelopment. Two trenches in the S of the site exposed mid- to late 19th-century foundations of two adjoining railway buildings shown on the 1886 and later Ordnance Survey maps. The S of these may have been an engine shed or workshop and was still standing in 1965 when this part of the site was used as a builder's yard. Evidence was found for the terracing of the N and S slopes of the hill during the period of railway construction, while the hilltop had also been subject to disturbance/removal of any soil horizons predating the mid-19th century. The natural downward slope in the N part of the site had been enhanced by a cutting for railway sidings associated with a former coalyard and 'sand drag' shown on late 19th- and 20th-century Ordnance Survey maps. A sand drag, also called a 'safety siding' or 'arrestor bed', is part of a track arrangement used to safely stop rail vehicles that are travelling at speed, particularly where they are out of control on a steep gradient, or to prevent unauthorized vehicles from leaving sidings and joining the main railway line.

Tom Woolhouse and Ben Hobbs,
Pre-Construct Archaeology, for CgMs Consulting on behalf of Weston Homes Plc.

Bury St Edmunds, 100 Southgate Street (TL/8563; BSE 520). An archaeological evaluation excavated four trenches prior to a new residential housing development. There was a high density of features in each trench, the most common comprising pits (14 in total), with sparse ditches, tree hollows and a post-hole also recorded. The most significant artefactual material was contained in four medieval rubbish pits; a high concentration of mid-13th- to early 14th-century sherds on one pit, and lesser quantities of pottery ranging between the late 12th–14th/15th centuries in three further pits. Documentary records from the abbey of Bury St Edmunds dating to the 15th century recorded tenements along Southgate Street; these features suggest the presence of backyard and garden areas behind dwellings on the street frontage.

A. Mustchin, Archaeological Solutions Ltd, for M & D Developments.

Bury St Edmunds, Moreton Hall, Mount Road (TL/8864; BRG 077). Excavation of c.9150m² area was undertaken ahead of development. A previous geophysical survey of the c.20ha development site was conducted in 2014 which was followed by two phases of trial trench evaluation in 2015. The excavation in 2018 targeted the results of the preceding Phase 2 evaluation. Several boundary ditches dating to the 12th and 13th centuries were revealed and

broadly delineated an area of activity most likely associated with agricultural land use. Several possible ovens and multiple, intercutting quarry pits were identified towards the N, with remains of a possible structure located in the S. Evaluation of Phases 3, 4 and 5, totalling c.12ha of the development site, was also undertaken in 2018, comprising the investigation of 76 trenches. 21 of these contained ditches and pits, with a slight concentration in the NE of the site. A small number of pits dated to the Late Neolithic/Early Bronze Age period. However, most features dated to the first half of the 20th century. Several ditches correlated with a road and runway associated with the former Rougham Airfield, most likely functioning as drainage ditches.

James Alexander and Angus Forshaw, Archaeology South-East, for CgMs Consulting.

Carlton Colville, Carlton Hall Tea Room and Extension, St Peter's Road (TM/5090; CAC 004). Three linear features of probable 18th–19th-century date were recorded during excavations associated with a new tearoom. Two of the features also produced small quantities of probable residual struck flint and 2 sherds of 11th–12th-century pottery. Excavations associated with the construction of an extension to the existing hall recorded linear features, post-holes and pits of late medieval to post-medieval and modern date which indicated settlement and agricultural activities.

Chris Birks,

Chris Birks Archaeological Services, for Carlton Hall Residential Care Home.

Clare, Clare Castle Country Park (TL/7745; CLA 123). 2018 saw the first of three seasons of community excavation at Clare Castle Country Park (Fig. 174). The work forms part of a larger Heritage Lottery Funded project awarded to the Country Park Trust. The archaeological programme is designed to build on the results of smaller scale community digs carried out previously across the park. This season's excavation took place in the Outer Bailey, an area about which surprisingly little is known, although 14th-century documents suggested that it might have housed the kennels, huntsmen and some ancillary activities. The area is now relatively flat and the space was divided in the 19th century by the access road for the railway station. A children's play area and the bowls club now occupy the N and E parts of the bailey. The three-week excavation attracted over 100 volunteers and over 800 visitors. It showed that the archaeological horizons, which included the masonry footings for a large building 19m x 9.5m, a cobbled yard and at least two large ovens, were well preserved within c.20cm of the grass surface. Metal finds included horseshoes and horseshoe nails as well as some enigmatic objects which have been identified as a specialised military type of arrowhead in use before the 14th century. Occasional sherds of Middle and Late Saxon pottery, as well as a copper-alloy brooch and a 7th-century bone pin, hint at the Saxon settlement which was thought to have occupied the site before the Norman castle was built. The medieval archaeology, however, was so well preserved and extensive that there was no time to investigate potential deposits sealed beneath those layers; investigation of this may form part of the research design for subsequent seasons. The volunteers continue to be involved in all stages of the post-excavation as the project progresses, including processing of soil samples and the washing, marking and quantification of the finds.

Jo Caruth, Suffolk Archaeology CIC,

for Clare Castle Country Park Trust funded by the Heritage Lottery Fund.

Clare, Land near 13 Callis Street (TL/7645; CLA 124). The site is within the medieval town, with the church of St Peter and St Paul 200m to the S and Clare Castle 450m to the SE. An archaeological evaluation was undertaken in advance of residential development. Excavation

of a single trench revealed two medieval pits, a medieval ditch and a modern pit. The pottery and animal bone from the medieval features indicated occupation from around the 12th–15th century. Residual prehistoric flints and Roman pottery sherds indicated earlier activity.

Elliott Hicks, Colchester Archaeological Trust,
for Andrew Stevenson Associates on behalf of APM Homes Ltd.

Creeping St Mary, Land adjacent to 54 All Saints Road (TM/1057; CRM 086). Excavation and monitoring of a small site to the SE of All Saints Road recorded a well-preserved series of features and finds across the site. This included evidence of typical domestic, light industrial and agricultural activity, mainly of 13th–14th-century date, with a lower quantity of 11th–12th-century finds and very limited material predating this. The bulk of the finds retrieved comprised a reasonably large assemblage of pottery alongside animal bone, shell, ceramic building material, fired clay, lavastone and post-medieval glass and nails. There were also small quantities of Roman brick and tile. Deposits of slag and ferrous spheroids suggested nearby smithing in the medieval period. The works have not revealed the precise location of any *in situ* medieval structures but given the finds retrieved, they are likely to be nearby and could well be located on the adjacent plot to the NE.

Rob Brooks, Suffolk Archaeology CIC, for Hart Build Ltd.

Elmswell, School Road (TL/9864; EWL 040). Following geophysical survey of a 4ha area in 2014, trial trench evaluation uncovered a low density of ditches and pits, the majority of which were identified by the previous geophysical survey. Evidence of early activity comprised a single pit of Late Bronze Age date and two ditches and a pit of Late Saxon/medieval date. A focus of 15th–16th-century activity in the NW of the site was bounded by an enclosure



FIG. 174 – Clare (CLA 123). Community excavation (© Suffolk Archaeology CIC).

ditch which was used until the late 19th century. A tile-built structure represented evidence of a possible kiln or tile-lined cesspit. Other features within this enclosure included a large quarry pit and smaller undated pits which were likely contemporary and suggestive of smallscale activity associated with Elmswell Hall to the immediate N of the site.

Angus Forshaw, Archaeology South-East, for CgMs Consulting.

Felixstowe, Ferry Road (TM/3136; FEX 316). In 2017, evaluation of a 4.6ha development site established the presence of prehistoric and late medieval/early post-medieval remains. Subsequent excavation in 2018 of four areas totalling 1.03ha targeted the recorded remains in the N and SE of the site. In the SE, the extent of a prehistoric hollow and buried soil was exposed which comprised naturally deposited drift sands containing a range of Early Neolithic pottery and worked flint. Early Neolithic pits were also identified, some cutting into the deposit. Residual Late Neolithic and Bronze Age artefacts suggested continued occupation of the landscape. A rectangular ditched enclosure of Early Iron Age date, with associated pits and post-holes, and the remains of a Late Iron Age rectilinear field system were recorded in the N of the site. Roadside settlement with early/mid-11th-century origins was identified in the N part of the site, evidenced by a concentration of pits, ditches and a possible building. Settlement activity appeared to have intensified from the 12th century onwards, with pit clusters, water hole/wells, a quarry, debris layers, a further possible building and an increased range of artefacts; this demonstrated occupation and associated agricultural activities within ditched enclosures/plots. The roadside settlement activity appeared to have ceased in the 14th century and was replaced by strip field systems dating to the 15th to mid-16th century. These field systems were restructured in the early post-medieval period to create larger rectilinear fields; this layout had been further simplified by the 19th century.

Paulo Clemente, Archaeology South-East, for CgMs Consulting.

Friston, Proposed agricultural reservoir, Friston Hall Farm (TM/4060; FRS 056). An excavation identified an Iron Age pit, Roman field boundary ditches and a post-medieval or modern boundary ditch.

Jonathan Orellana, Cotswold Archaeology.

Great Blakenham, Stowmarket Road (TM/1150; BLG 037). In 2016, geophysical survey and trial trench evaluation was undertaken. Subsequent excavation in 2018 of a 4000m² area targeted the Late Saxon/early medieval remains recorded in the E of the site. A single, large Roman ditch crossed the excavation area on the same N/NW-S/SE alignment as the former Roman road (now Stowmarket Road). A large beam-slot building, of Late Saxon date, was uncovered in the centre of the site, with two further possible structures recorded to the S and E. Several pits and post-holes recorded in the vicinity of these buildings possibly relate to this phase of occupation (Fig. 175).

Rob Cullum, Archaeology South-East, for CgMs Consulting.

Great Whelmetham, Stanningfield Road (TL/8760; WLG 038). An archaeological excavation on the S edge of a known Roman settlement identified three phases of Roman activity. The first comprised an extensive scatter of quarry pits to exploit the natural sand geology, probably associated with the construction of parts of the Roman settlement. The second phase comprised a single large boundary ditch that traversed the site, potentially forming a S boundary to the Roman settlement. The boundary ditch contained a rich array of finds including a complete brooch, several coins and pottery in good condition, with cross-joining fragments recovered from segments along its length. Mould-decorated and stamped Samian

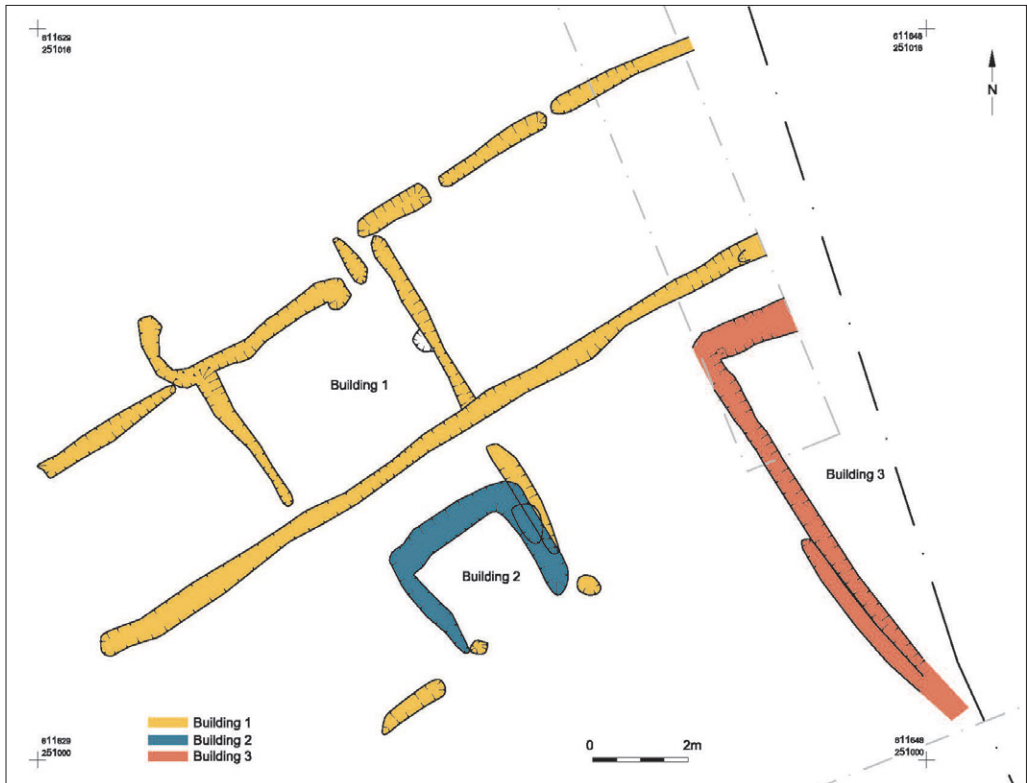


FIG. 175 – Great Blakenham (BLG 037). Site plan
(©Archaeology South-East/University College London 2019).

were suggested deposition and backfilling in the second half of the 2nd century and is associated with a range of colour-coated beakers and local coarse wares. The last phase of Roman activity comprised a cemetery; 54 inhumation burials and a single cremation were recorded within the excavated area at varying depths, including examples cut into the natural sand, the backfilled deposits of quarry pits and the boundary ditch. The graves are generally unadorned, but two included bone combs that suggested they date to the late 4th century. There was a very high proportion of deviant burials within the cemetery, with potentially over a third being decapitation burials (Fig. 176) and another third placed in non-supine positions (prone, flexed and crouched). The decapitation burials included several examples with skulls placed at their feet, or adjacent to the legs, and possibly some with additional skulls placed in the graves. Initial analysis suggested the burial population was middle-aged to older, with a near equal proportion of male to female graves, and extensive pathological conditions resulting from physical and nutritional stress. However, a single three- to four-year-old was revealed which had also been decapitated with the head placed between its legs; another adult burial had the skull of a dog placed on its feet.

Kerrie Bull, Archaeological Solutions,
for Havebury Housing Partnership.

Hadleigh, Aldham Mill Hill (TM/0243; HAD 160). 24 evaluation trenches and 6 test pits targeted anomalies identified by previous geophysical survey and cropmarks depicted on aerial



FIG. 176 – Great Whelnetham (WLG 038). Roman burial (© *Archaeological Solutions*).

photography. A single small pit toward the NE of the site was tentatively identified as of possible Mesolithic or Neolithic date. Three ring-ditches, possibly Bronze Age, correspond with others previously excavated to the SE. To the NW, a small square-shaped enclosure constituted the remains of a possible Early Iron Age funerary monument. An extensive Roman enclosure and trackway was recorded across the N of the site. Pits and ditches probably relating to the occupation or use of the enclosure were recorded in its interior. A further extensive ditch running across the enclosure suggested that land use in the Roman period was multiphased. Evidence of post-Roman land use activity was limited to a single post-medieval ditch.

James Alexander, Archaeology South-East, for CgMs Consulting.

Halesworth, Land N and E of Hill Farm Road (TM/3977; HWT 051). Trial trench evaluation identified a large pit that was purposely lined with flint cobbles and contained a significant amount of Early Neolithic pottery, struck flint, and flint tools. Two further undated features may also relate to this period of activity.

Michael Green, Suffolk Archaeology CIC,
for CgMs on behalf of Hopkins Homes Ltd.

Halesworth, (TM/3978; HWT 054). The remains of a medieval enclosure and field system located to the N of the town were excavated. The remains featured a roughly square enclosure with an entrance to the NE. The entrance may have been created after the infilling of part of the enclosure ditch in that area. Other phasing included internal divisions that segregated parts of the enclosure. Sherds of medieval pottery, of 11th–13th-century date, were recovered from ditch fills. As well as the pottery, the excavation recovered samples that contained fuel waste, fired clay and animal bone that was interpreted as midden activity.

Kevin Moon, Archaeological Services, West Yorkshire Joint Services.

Harkstead, Nether Hall Farm (TM/1934; HRK 098). An archaeological evaluation, consisting of 24 trenches, was carried out in advance of a proposed reservoir. Archaeological features were identified in 12 trenches, mostly in the form of post-medieval field boundary and drainage ditches. Two large undated features in the NW corner of the site were not clearly identifiable, however, one of the features could represent a former pond, given its humic fill and proximity to both a N-S watercourse and an existing pond just outside the proposed development area. Prehistoric activity was identified adjacent to the S boundary of the site; a probable Bronze Age ditch was recorded close to a large shallow pit or natural hollow filled with heat-altered, flint-rich material and a silty fill containing Late Bronze Age pottery. It is possible that at least some of the undated ditches elsewhere on the site, which had sterile, leached fills and were sealed by a layer of subsoil, were also of prehistoric date. Activity associated with a disused gravel quarry marked on historic maps appears to have impacted on the NE edge of the site, but the full extent of this is unclear.

Linzi Everett, Suffolk Archaeology CIC, for Mr Tom Wrinch.

Haughley, Land W of Fishponds Way (TM/0361; HGH 060). An evaluation of 15 trenches was undertaken in advance of a proposed residential development. The results showed archaeological activity from the Late Neolithic/Early Bronze Age to the Iron Age/Romano-British periods. Archaeological features were mainly located along the SW boundary of the site. Three discrete features contained sherds of Later Neolithic/Early Bronze Age Beaker pottery. Two discrete pits contained charcoal flecks but no archaeological artefacts. The rest of the features identified across the site were undated. However, two funerary urns of probable Iron Age/Romano-British date were recovered. A large undated feature, most likely a quarry pit, was also found.

S. McAdams and T. Michaels, Foundations Archaeology,
on behalf of Catesby Estates PLC.

Herringswell and Tuddenham, Herringswell (TL/7270 to TL/7470; HGW 025 and TDD 036). During evaluation for a water pipeline, trenches 1 to 5 at the W end of the route revealed linear features containing a small amount of Romano-British pottery and other associated finds. Trenches 10 to 15, at the E end of the route, revealed a small number of discrete, pit-like features which contained a very small amount of Early Bronze Age Beaker pottery and Early Iron Age pottery. Consequently, four excavation areas were identified, the first of which, Area 1, was located along the central portion of the route. It revealed four prehistoric pits, one of which contained a large volume of Early Iron Age pottery and a dump of fired clay. Early Iron Age pottery and various flints were also recovered from the remaining three areas, along with a decorated, teardrop-shaped chalk loom weight. Further to the E, Area 2 exposed several heavily truncated small pits or post-holes, none of which produced any finds to supplement the Beaker pottery found in Trench 12 previously. Towards the W end of the scheme, Area 3 revealed a dense collection of ditches, the function of which was difficult to determine within the constraints of an 8m wide easement. These features produced a modest amount of Romano-British pottery, along with some medieval ceramics nearer to the known historic settlement of Herringswell. Immediately to the W, Area 4 contained further ditches, some of which were substantial. A small amount of Romano-British pottery was recovered from these features.

Neal Mason, Oxford Archaeology East, for Anglian Water.

Holbrook, Ipswich Road (TM/1637; HBK 064). An excavation of an area c.70m² revealed 34 pits, one possible post-hole and ten ditches. The excavation identified Late Neolithic/Early

Bronze Age Beaker settlement activity in the form of a pit cluster in the NW with other possible dispersed pits nearby. Some of the Beaker pits yielded baked clay fragments, burnt or heated flint and stones, as well as charred hazelnut shells and barley grains. A coaxial ditched field system, which included part of a driveway, was most likely to be later than the Beaker settlement activity. Due to a lack of securely stratified artefactual material and poor stratigraphic associations, the ditches remained poorly dated; however, a limited amount of pottery from the ditch fills, along with their general layout, suggested that they could possibly be of Iron Age/Roman date.

A. Hood, Foundations Archaeology, on behalf of Taylor Wimpey PLC.

Ingham, Place Farm, The Street (TL/8469; ING 037). Archaeological works on a 220-trench evaluation was partially completed in 2018. The trenching identified archaeology predominantly in four areas: a prehistoric burnt mound; a Saxon pit and some possible prehistoric features; a concentration of Romano-British ditches and other features; and an extensive group of features of predominantly Romano-British date but including at least one pit containing Neolithic pottery and a palaeochannel. Further work can be anticipated in 2019.

Thames Valley Archaeological Services East Midlands, for Armour Heritage.

Ingham, Solar Farm North, Bodney Farm (TL/8472: ING 035). Evaluation over an area of 19.5ha in September 2018 involved 115 trenches. Six features including possible pits and tree-throw holes were investigated; two of these produced 19 sherds of Late Bronze Age/Early Iron Age pottery and 2 sherds of Roman pottery. 12 worked flints were recovered from three of these features.

Luis Esteves of Thames Valley Archaeological Services East Midlands,
for Armour Heritage.

Ipswich, Alexander House, 19–23, Fore Street (TM/1644; IPS 1996). Monitoring of excavated groundworks was carried out to the rear of Alexander House in advance of new dwellings. The site had been subject to some modern disturbance, but significant archaeological deposits survived below a 0.4m thick layer of recent overburden. A layer of likely Saxon to medieval topsoil was observed throughout the excavated footings, sealing the natural, undisturbed subsoil. A series of pits appeared to cut this layer but these were difficult to define, partly due to the deep narrow trenches and partly because the pits were backfilled with material broadly the same as the layer they cut. The finds assemblage was typical of sites in the centre of Ipswich, including locally made Ipswich ware and Thetford-type ware, as well as continental ceramics reflecting Ipswich's role as a trading port. An interesting assemblage of material associated with clay tobacco pipe production was collected from unstratified contexts, which suggests the presence of a mid-19th-century kiln in the vicinity.

Linzi Everett, Suffolk Archaeology CIC, for Diggerwork Construction Ltd.

Ipswich, Henley Gate (TM/1647; IPS 881). Three excavation areas, totalling c.1.87ha, were opened in the SW of the site following earlier evaluation of c.76ha in 2016 and 2017 which identified Iron Age and Early Roman activity. In 2018, a small quantity of prehistoric worked flint and pottery was found to be residual in later features across the excavation areas. The remains of Early Iron Age roundhouses and post-built structures were scattered across the excavation areas, with two possible roundhouses possibly within a small linear enclosure, perhaps representing the main area of settlement occupation. A loose cluster of pits and post-holes indicated limited land use throughout this period, with recovered loom weights and



FIG. 177 – Ipswich (IPS 865). Excavation at Lower Brook Street (© Oxford Archaeology East).

saddle querns suggestive of occupation activity. Roman remains concentrated in the S of the site comprised three phases of Early Roman field boundaries and enclosure. No structural evidence was present, with remains of activity located within the bounded areas demonstrated by scattered pits and post-holes. Strip field systems of narrow parallel ditches/gullies were encountered across all three excavation areas. Despite the limited, largely residual, material recovered from these features, their stratigraphic relationship with earlier and later features was suggestive of a medieval date. A small number of late post-medieval/modern pits, some indicative of quarrying, demonstrated the continued agricultural nature of land use on site.

Angus Forshaw, Archaeology South-East, for CgMs Consulting.

Ipswich, Lower Brook Street (TM/1644; IPS 865). Excavation revealed extensive remains of Late Anglo-Saxon and early medieval (pre-Norman) date (Fig. 177), including ditches which may have formed property boundaries. Features found within the properties included shallow flat-based pits reminiscent of tanks, as well as a possible sunken featured building and post-holes belonging to other structures such as fences and sheds. Waterlogging at the base of the features had preserved materials such as small scraps of textile including woollen cloth, possibly sacking, and the bases of timber posts. Other material remains included animal and fish bones. One tank contained a large quantity of oyster shells and it is suggested that the tank was used for keeping oysters fresh. Large amounts of pottery and other artefacts were also recovered; items of note include a fragment of a worked bone ice skate, a large bone needle, a whetstone and a cogwheel-type brooch.

James Fairbairn, Oxford Archaeology East, for CgMs Consulting.

Lakenheath, RAF Lakenheath Infrastructure Expansion (TL/7481; LKH 393 and 394). Evaluation and excavation on the S side of the airfield at RAF Lakenheath revealed a well-preserved heathland landscape and Late Neolithic to Early Bronze Age occupation. Many of the trenches contained deep deposits of buried soils and sequences of wind-blown sands covering an area of more than seven hectares. Following the evaluation, the focus of the excavation was on a trench that had produced Late Neolithic to Early Bronze Age pottery from a dark sand layer. A 15m x 20m area was opened, gridded and excavated through a humic palaeosol underlying a substantial wind-blown sand deposit. The darker material produced substantial quantities of Late Neolithic to Early Bronze Age pottery, worked flint of the same date, as well as limited Mesolithic flint and heat-altered stone. This indicated an unusual focus of occupation and analysis work is ongoing. The periods of sandblow overlying the material were not dated within the excavation, but elsewhere on the base this has sealed Roman features, with documentary and antiquarian reports describing severe episodes in the 17th century. The presence of buried soil layers sealed beneath the wind-blown sand provide important data about the landscape, environment and land use during the Mesolithic to Middle Saxon periods of archaeological occupation at RAF Lakenheath. Other features were infrequently encountered in the evaluation, but included evidence for an undated cremation burial in the form of a small quantity of redeposited pyre debris in a pit at the W end of the works and a single undated ditch following the natural slope of the land. Other features were shallow and appeared to have naturally occurring fills; these may represent undulations and disturbances in the natural geology rather than archaeological activity.

Rob Brooks and Rebecca Smart, Suffolk Archaeology CIC,
for Interserve/Defence Infrastructure Organisation.

Lavenham, Land adjacent to Bears Lane, (TL/9148; LVM 121). An archaeological evaluation revealed a cluster of pits and ditches associated with a kiln, a grave and a surface or layer focussed on the central-S area of the site that are of Roman date, probably within the latter half of the 2nd century. The artefactual evidence was consistent with substantial domestic occupation and a building in the immediate vicinity. The Roman pottery included a Samian ware dish with a maker's stamp. The animal bone included butchered cattle, horse and deer bone. Other finds included copper-alloy coins, a pin, strap-end and a bronze or brass disc bearing the bust of an emperor, possibly part of a brooch or similar adornment. The peripheral nature of the site to the S edge of the historic core of Lavenham was confirmed by a sparse number of post-medieval quarry pits and ditches. Very low quantities of residual prehistoric struck flint and pottery were also recovered and a medieval silver cut halfpenny of Henry III from the subsoil.

Samuel Thomelius, Archaeological Solutions, for Marden Homes Ltd.

Leiston, Land S of Red House Lane (TM/4461; LCS 218). Excavation revealed part of a Middle Bronze Age settlement in the form of two separate ditched enclosures. The features yielded almost exclusively sherds of Deverel-Rimbury pottery that were radiocarbon dated by associated short-lived species charcoal to the 14th–13th century cal. BC. Residual Early Bronze Age pottery and flintwork also demonstrated earlier occupation in the environs of the site. There was an almost complete lack of datable evidence for Late Bronze Age activity, suggesting the settlement was either abandoned or shifted to a new location by this period.

Graeme Clarke, Oxford Archaeology East, for CgMs Consulting
on behalf of Hopkins Homes Ltd.

Little Wrattling, Land NW of Haverhill (TL/6746; WTL 013). Excavation revealed an extensive but undated field system, likely to be later prehistoric in date as it was on a different

alignment to later securely dated features. The most significant discoveries related to a series of ditched fields and enclosures laid out on either side of a trackway, but predominantly on its N side. The track led W from the Haverhill road towards a medieval site known as Alderton Chapel, later occupied by Chapel Farm. The earliest boundaries and a smaller track appear to have been established in the late 11th to 12th centuries AD but were subsequently reworked on several occasions. Although predominantly agricultural in character, there was clear evidence of domestic activity within some of the enclosures, including structural remains and rubbish pits, along with more 'industrial' pits/tanks, quarries and possible work surfaces. The densest activity was concentrated in the W extents of the excavated areas, closer to the track and the presumed site of the chapel. Activity appeared to decline by the 14th century and the land was no longer inhabited by the late medieval to early post-medieval period; a fate presumably linked to that of the adjacent chapel.

Steven Graham, Oxford Archaeology East,
for CgMs Consulting on behalf of Persimmon Homes.

Little Wratting, Kedington to Boyton Hall Water Pipeline (TL/6947–6747; WTL 014). Evaluation trenching along the route of a new water pipeline identified archaeological features in seven of the 26 excavated trenches with a clear focus of activity in Trenches 19 and 20, adjacent to the church of St Mary (HER WTL 002). The earliest activity dated to the Late Bronze Age to Early Iron Age and comprised three ditches at the E end of Trench 20, two of which form the corner of a rectilinear enclosure extending beyond the trench. Residual pottery and struck flint found in later features also demonstrated prehistoric activity. A later Anglo-Saxon (AD 850–1100) gully in Trench 19 may be a structural feature. The majority of the archaeological features, comprising ditches, pits, post-holes and possible structural slots, appeared to represent an early to 'high' medieval (AD 1100–1400) settlement located on the high ground E of the church.

Matt Jones, Pre-Construct Archaeology, for Anglian Water.

Long Melford, Land off Station Road (TL/8644; LMD 273). Archaeological evaluation was carried out ahead of proposed residential development of this c.8ha site following earlier geophysical survey. The evaluation identified the fragmentary remains of a Late Neolithic Grooved ware vessel buried in a small pit. The vessel had been truncated by modern ploughing, but the limited proportion of the vessel base that was present suggested that it had probably been broken prior to deposition and was only ever a partial deposit. Soil samples from the pit did not contain any human bone or environmental remains. Other archaeological features consisted of quarry pits, predominantly dating to the later post-medieval and modern periods but including one small quarry pit of possible medieval date, as well as post-medieval and later field boundaries. Residual sherds of Roman and medieval pottery, and fragments of contemporary brick and tile, indicated activity of these periods in the wider vicinity.

Alexander Pullen, Pre-Construct Archaeology,
for Pegasus Group on behalf of Gladman Developments Ltd.

Long Melford, Land W of Hall Road (TM/8656; LMD 215). An area of 1.14ha was excavated within the former Roman town of Long Melford. This followed two previous evaluations on the site which recorded Roman features including two inhumations, quarry pits and ditches. The 2018 excavation revealed a large number of pits and several linear ditches, primarily in the E half of the site, with a significant level of truncation and post-medieval layers across the remainder of the site. Three inhumation burials were excavated including two previously recorded during the evaluation. Disarticulated human bone was also found in one of the pits. A substantial quantity of Roman artefacts including pottery, animal bone, ceramic building

material and objects of metal and worked bone were recovered during the excavation, with a small quantity of later prehistoric and post-medieval material also found.

Andrew Souter, Wessex Archaeology, for Nicholas King.

Mildenhall, Mildenhall Hub (TL7074; MNL 798). Following an evaluation in 2016/17, archaeological excavation was carried out on the site of the Community Hub, off Sheldrick Way and Queensway/West Row Road (Fig. 178). The archaeological horizons were preserved to variable levels across the site relating to the levels of ploughing, with significant depths of certain ditches and pits truncated, suggesting that shallower features had already been completely lost. The earliest and largest feature was a palaeochannel that ran across approximately half the length of the excavation area. During the Middle Iron Age to Early Roman period, the palaeochannel had already silted up somewhat. It appeared to have been marshy, with peat and fine silt formations, at a time when the deposition of animal remains, a human mandible, occasional coins and occasional prehistoric pottery and worked flint was also taking place. Several Middle Iron Age ditches appeared to utilise the channel terminating within it to form enclosures. Several other ditch boundaries were likely contemporary as were several clusters of circular pits, numbering between two and twenty-five features in each group.

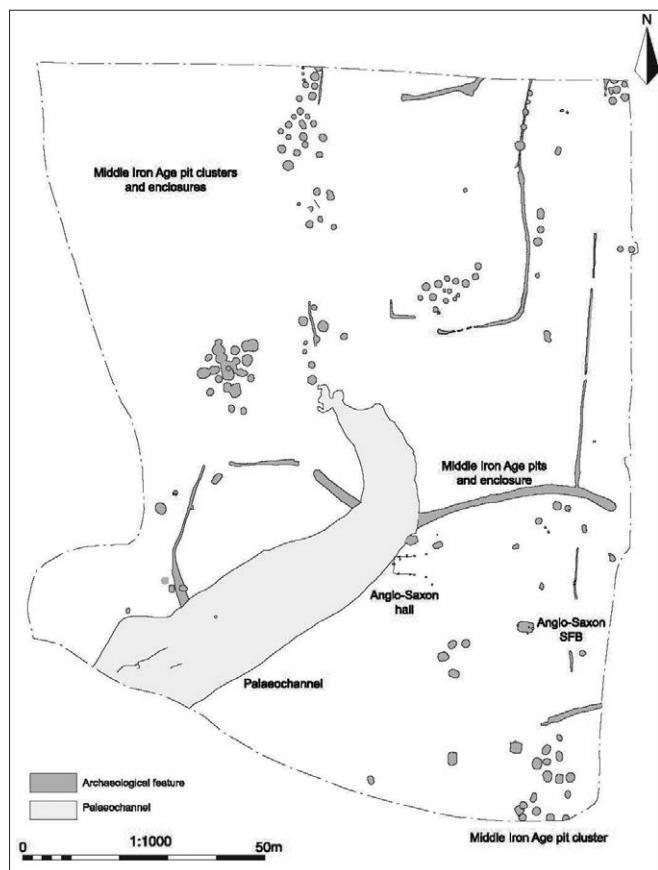


FIG. 178 – Mildenhall (MNL 798). Site plan
(© Suffolk Archaeology CIC).

These produced occasional remains of pottery and other material, including the remains of two adult burials, whilst another contained a human skull fragment. An atypical pit cluster also contained the remnants of an oven or kiln base as well several cow skulls and a complete pony skeleton. Saxon remains on the site included a shallow sunken featured building (SFB) and a presumably associated but undated post-hole building; this is in addition to two SFBs and halls, and a 7th-century burial recorded in the earlier evaluation. Limited evidence for Late Iron Age/Early Roman and medieval to post-medieval occupation was identified from a low level of finds including, amongst others, a 2nd-century AD duck brooch, a steelyard arm, tokens, coins and pilgrim badges.

Rob Brooks, Suffolk
Archaeology CIC, for Forest
Heath District Council.

Rendlesham, Area 8 – SSSP12 (TM/3353; RLM 083). A programme of archaeological trial trench evaluation revealed Late Iron Age/Romano British ditches along the N and W periphery of the site.

Martin Cuthbert, Suffolk Archaeology CIC, for Capital Community Developments.

Rickingham and Botesdale, (TM/0475; BOT 047). Eight 1m² archaeological test pits were excavated in both Rickingham and Botesdale as part of the Independent Learning Archaeology Field School (ILAFS) programme. They were dug by 32 Year 7 and Year 8 students from the King Edward VI School and St Benedict's Catholic School, Bury St Edmunds. Six of the eight pits revealed further activity dating to the high medieval period and showed the extent of the settlement at this time, not only along the main road, but also on the roads that branch off The Street, along Back Hills and Cherrytree Lane. Activity dating to the later medieval period supported the results from six test pits in 2017, with an evident shift in the settlement <https://www.access.arch.cam.ac.uk/reports/suffolk/rickingham-and-botesdale>.

Catherine Collins and Alison Dickens,
Access Cambridge Archaeology, University of Cambridge.

Santon Downham, Downham High Warren Lodge (TL/8084; STN 187). As a part of the Forestry Commission's Heritage Lottery Fund (HLF) project 'Trailing the Hidden Heritage of High Lodge', a community fieldwork investigation was carried out with the aim of identifying the location of the former medieval Downham High Warren Lodge. The approximate location of the former warren lodge was only very broadly known and an area for investigation was chosen based upon the reasonable assumption that the post-medieval High Lodge Farm was a later development on its site. Initial examination of historic mapping, visual site survey and magnetometer and earth resistance meter survey confirmed the location and presence of surviving structural remains relating to the former farm, which had been demolished in the mid-20th century. Subsequent hand excavation of five small test pits demonstrated that the foundations of the farmhouse and a garden or yard wall survived immediately below modern ground level and corresponded directly to the historic mapping. There was no indication that the farmhouse structure incorporated, reused or was built upon the earlier medieval lodge and the finds assemblage and building debris was consistently of post-medieval date. This suggests that the lodge may lie outside of the investigation area and that the farm was a separate new development. A further three test pits unexpectedly retrieved a substantial quantity of mixed Later Iron Age/Roman material from topsoil and subsoil deposits and a surviving archaeological horizon at a depth of c.0.5m–0.6m with evidence for two probable ditches. This is the first 'modern' investigation in the vicinity to have identified such evidence and it is thought to be contemporary with early 20th-century records of similar deposits seen 100m–200m to the S.

John Craven, Suffolk Archaeology CIC,
for the Forestry Commission Heritage Lottery Fund project
'Trailing the Hidden Heritage of High Lodge'.

Saxmundham, Land E of Beech Road (TM/3863; SXM 051). Excavation exposed a cluster of Late Iron Age and Early Roman features within the N part of the excavation, mostly in the NE corner. These included two perpendicular boundary lines, one running roughly N to S (formed by two parallel ditches) and the other to the W, aligned E to W (consisting of a single ditch). The rest of the features were primarily pits and post-holes, including a possible four-post structure, and a single very large post-hole. The site was located on the slope of a hill and much of the N and W parts of the site were covered by colluvial deposits overlying the Iron

Age and Roman features. A large quantity of pottery was recovered from the colluvial deposits, including Iron Age, Anglo-Saxon and post-medieval sherds.

Nicholas Cox, Oxford Archaeology East, for Hopkins Homes.

Shotley, Shotley Gate (TM/2434; SLY 166). Evaluation revealed archaeological remains, primarily in the NW of the site. A possible prehistoric field system was identified, with several ditches being on a different alignment to modern day boundaries. Medieval activity in the very NW part of the site may relate to properties or plots fronting onto the B1456, the main road through the village. WW2 activity consisted of what appeared to be two machine-dug trenches backfilled with concrete anti-tank obstacles and what is believed to be a crenelated ditch or air raid shelter, recorded on the Suffolk HER (SLY 088) running along the N edge of the field.

Thomas Lucking, Oxford Archaeology East, for Haylink Ltd.

South Elmham St Mary, otherwise Homersfield, Flixton Quarry (Site 16 Extension), (TM/2985; SEY 038). Archaeological excavations at Flixton Park quarry continued throughout 2018. Chronologically, the earliest activity was represented by a low density of Neolithic and Bronze Age pits, generally scattered but with occasional discrete clusters. A concentration of Iron Age pits in the NE of the site adjacent to a large deposit of heat-altered flints was close to a concentration of Iron Age activity excavated in 2017. Three undated, but most likely prehistoric, cremation burials were excavated including one located central to four post-holes, which suggested some kind of grave marker or possibly a mausoleum-like structure. Ten inhumation burials were also recorded. Generally, these were arranged in pairs, aligned NE to SW and probably represented pre-Christian, most likely Roman, burials. The graves did not contain any artefacts and very little bone survived in the acidic soil, although staining interpreted as possible planks or a coffin was identified in one of the graves. The S extent of medieval activity on the site was identified, with the metalled surface excavated in 2017 shown to predate the ditches enclosing the buildings. Post-medieval features included ditched field boundaries and regular-shaped pits which contained articulated animal skeletons.

Simon Picard, Suffolk Archaeology CIC,
for The Guildhouse Consultancy on behalf of Cemex UK Materials Ltd.

Stowmarket, Chilton Leys (TM/0359; HGH 055). Following geophysical survey and extensive trial trenching in 2016 and 2017 on 30ha of land at Chilton Leys, three excavation areas totalling c.3.1ha targeted the results of the preceding fieldwork. Prehistoric activity was represented by a Bronze Age pit in the S and a cluster of small pits or post-holes and a nearby ditch in the central part of the site, all of which contained probable Bronze Age pottery. The earliest significant phase of activity was represented by a system of parallel trenches in the N. Little dating evidence was recovered, but the trenches were assumed to relate to Roman or early medieval agricultural land use. A medieval hollow trackway, running between Shepherd's Farm to the N and Chilton Leys Farm to SW, crossed former agricultural ditches which indicated a significant change of land use. Three distinct areas of medieval occupation (dated provisionally to the 12th–14th centuries) were identified adjacent to the trackway. In the N, a substantial ditched enclosure surrounded a number of large quarry pits and smaller rubbish/cesspits. No clear structural evidence was encountered though it is possible that these remains constituted a moated farmhouse, perhaps the original late 15th-century site of nearby Shepherd's Farm. A second, smaller ditched enclosure, in the SW, was subdivided by shallow ditches suggestive of a medieval toft and adjoining kitchen garden. An apparently unenclosed medieval settlement area was located in the central part of the site. Several small linear ditches

aligned perpendicular to the trackway might have defined house plots, and nearby ditches possibly defined a rectilinear field system. A significant quantity of medieval pottery provided evidence for domestic activity in this location.

Kieron Heard, Archaeology South-East, for Taylor Wimpey East Anglia Ltd.

Stradbroke, Land formerly Mark Peacock Land Rovers, Neaves Lane (TM/2373; SBK 051). An archaeological evaluation was carried out in advance of proposed new dwellings. In the grassed, W part of the site, two adjacent ditches were recorded, both containing a good assemblage of 11th–13th-century pottery as well as fragments of burnt clay, possibly remnants of an oven dome.

Linzi Everett, Suffolk Archaeology CIC, for CNC Property Development Ltd.

Sutton, Tranmer House, Sutton Hoo, Phase 1 (TM/2848; SUT 294). A team of archaeologists and National Trust volunteers carried out an excavation within the boundary of the Scheduled Ancient Monument (List entry number: 1006068), in the footprint for a proposed viewing tower and associated ramp as part of a redevelopment of the site to improve the visitor experience. Features, possibly ditches, of uncertain date were recorded in the N of the excavated area, near the ridge of the hill, with a large ditch of probable late medieval date in the S. 20th-century activity to the N of this ditch was evidenced by two pits, one of which contained two metal canisters thought possibly to date to army manoeuvres in the area during WW2.

Alison Telfer, MOLA, for the National Trust funded by the Heritage Lottery Fund.

Thurston, Norton Rd (TL/9265; THS 029). Following a geophysical survey across c.11ha of land S of Norton Road, 56 evaluation trenches were excavated targeted on geophysical anomalies. Archaeological remains comprised a low density and low complexity of ditches and pits scattered across the site. Prehistoric flintwork and pottery, as well as undated fired clay and fire-cracked flint, provided evidence of prehistoric occupation. A number of undated pits were interpreted as possible hearths/cooking pits. A Late Saxon/medieval refuse pit in the W of the site was suggestive of settlement occupation within the vicinity, although no direct evidence for buildings was encountered. An undated, possibly structural, gully and post-hole found nearby, however, may have been associated. A number of recorded post-medieval ditches directly corresponded with field boundaries depicted on early and mid-19th-century maps.

Kieron Heard, Archaeology South-East, for CgMs Ltd.

Thurston, Land W of Ixworth Road (TL/9165; THS 030). During evaluation, an Early Neolithic pit containing struck flints and a single sherd of pottery was uncovered in the N of the site. Adjacent to this was a second, undated, but potentially related pit. A pair of roadside ditches marking Peddars Way, the Roman road linking Chelmsford to Ixworth, were found in the SW of the site. These were clearly visible, albeit intermittent, on the results of the geophysical survey of the area and appeared in two of the four excavation trenches that targeted them. A single iron nail was found in one of the ditches. There was no sign of nearby associated settlement. Post-medieval quarry pits, some shown on 19th- and 20th-century Ordnance Survey maps, were present in the S of the field. A field boundary ditch, probably filled in during the 20th century, was found in the N of the site.

Stuart Ladd, Oxford Archaeology East, for CgMs Heritage (Part of RPS Group PLC) on behalf of Persimmon Homes.

Wangford, Wangford Warren Habitat Creation Scheme Phase 2 (TL/7781; WNG 062). A second phase of trial trenching was carried out, following on from Phase 1 in 2017, ahead of the creation of a new habitat for stone curlews and nightjars. The 88 excavated trenches (total 1500m) revealed features and deposits containing struck and/or burnt flint. Proportions of the struck flint were broadly assigned to the 'earlier' or 'later' prehistoric period; however, the majority is characteristic of Late Neolithic to Early Bronze Age flintworking. Substantial quantities of worked and burnt flints were recovered from the topsoil and subsoil across the entire evaluation area, in some cases at densities that must reflect flintworking areas, as well as possible settlement activity. In most cases, the areas with the greatest densities of worked flint also had surviving prehistoric buried soils from which the greater proportion of the artefacts are likely to derive. 'Cut' archaeological features were infrequent but were best preserved underneath surviving earthworks of medieval and post-medieval rabbit warren banks. These deposits had also preserved underlying buried soils. Ditches, pits and post-holes, both undated and containing earlier prehistoric lithics, were also identified.

Lindsay Lloyd-Smith and Lawrence Morgan-Shelbourne, Pre-Construct Archaeology, for Jacobs UK Ltd on behalf of Highways England.

Wangford with Henham, Area 7B, Wangford Quarry (TM/4677; WNF 023). Excavation revealed a continuation of Early Neolithic features seen in previous excavation areas to the E. Interestingly, a deep slot of Early Neolithic date, which may be a bedding trench for posts, was cut by a pit containing Beaker pottery. Prehistoric ditch systems continued into this area and a scatter of largely undated features, probably of later prehistoric date, was also recorded.

Jezz Meredith, Suffolk Archaeology CIC, for Cemex UK Ltd.

Wickhambrook, Gifford's Hall (TL/7753; WKB 051). A trial trench evaluation and monitoring of geotechnical pits were carried out in connection with the extension of the house and reinstatement of the infilled N arm of the moat at Gifford's Hall. Within the moated enclosure, N and E of the existing late 15th-century timber-framed house (Listing no. 1235864; HER WKB 002), medieval remains were found at depths of 1–1.5m below modern ground level, beneath layers of post-medieval and modern made ground. The nature of the remains, which largely date to the mid-12th to 14th centuries, is uncertain due to limited exposure in the trenches, but they included a possible ditch or pit, a buried soil layer and two thick deposits of soil that may be associated with earth-moving during this period.

Simon Carlyle, Pre-Construct Archaeology, for Cowper Griffith Architects.

Yaxley, Land W of A140 (TM/1275; YAX 040). Evaluation revealed two ditches and a pit yielding medieval pottery dating to the 11th–14th centuries. Historic mapping suggested that these were linked to green-edge/common-edge settlement W of Pye Road, a former Roman road on the line of the A140. A series of other ditches corresponded to boundaries depicted on the 1885 Ordnance Survey map of Yaxley. By contrast, at the far W edge of the site were three other ditches on a NE to SW alignment. These may predate the orientation of historic field boundaries and are potentially of Romano-British origin.

Tom Collie, Oxford Archaeology East, for Drax Power Ltd.

Yaxley, Eye Airfield (TM/1274; YAX 040). Excavation was undertaken across three areas, these revealed remains spanning the Bronze Age through to the post-medieval period. Bronze Age activity included the remnants of a burnt flint mound. The principal features associated with this burnt mound included a large pond and a series of pits cut within the silting horizons of the pond. In addition, a spread of burnt flint was identified, first observed in the topsoil,

but also recovered as residual material in Romano-British features. Pollen evidence showed that the pond had been open when the surrounding land had been open grassland and not secluded woodland. Early occupation dating to the Late Iron Age and Early Romano-British periods was represented by four roundhouse eaves drip-gullies, which were uncovered alongside smaller structures indicated by smaller ring-gullies and post-holes. An increase in activity was evident during the early-mid Romano-British period. Three enclosure systems were discovered, and the roundhouses were replaced by enclosures and track/droeways alongside structures and numerous pits and post-holes. Four identifiable groups of post- and stake-holes were also encountered, indicating the presence of structures. Finally, field systems and smallscale pitting activities dated to the medieval and post-medieval periods, with activity being most intensive in the 12th–13th centuries.

Tom Collie, Oxford Archaeology East, for Drax Power Ltd.

Yaxley, Eye Airfield (TM/1274; YAX 041). Two main zones of activity were revealed during evaluation. Zone 1 in the NE corner of the site comprised a scatter of ditches, gullies, pits and post-holes, tentatively assigned to the Romano-British period based on the recovery of a small number of pottery sherds. Features included two charcoal-rich pits containing burnt flint and fired clay, possibly the waste from a grain-drying structure or bread oven. Ditches in the surrounding trenches were thought to represent the remains of a small, rural Roman farmstead. The archaeology in Zone 2 comprised a network of ditches, largely devoid of finds. Dating was problematic, but the ditches were thought to be Roman in date, forming part of a wider field system previously identified to the S of the site. A series of post-medieval ditches was uncovered across the E part of the site corresponding with linear anomalies recorded by the geophysical survey and with a system of field boundaries depicted on historic maps between 1839–1942. The evaluation also uncovered the footings and demolition spread of ‘Red Barn’, a 19th-century agricultural building/farm demolished as part of the construction of the airfield in 1942. Features associated with the construction, use and dismantling of the WW2 airfield were recorded in the W half of the site.

Following on from the evaluation, excavation was undertaken across two areas. The earliest features were dated to the middle Bronze Age and included a watering hole in the SE of the site. A concentration of prehistoric features was located close to the watering hole including 15 pits containing varied amounts of burnt stone. The Roman period was represented by the remains of a trackway extending across both areas of excavation, possibly linking settlements recognised by the earlier excavations at Eye Airfield (YAX 040). The most significant period of archaeological activity dated to the medieval period, specifically the 11th–12th centuries. Features of this date dominated the N part of Area 1 where four enclosures and three or four timber structures were identified together with the remains of a cultivation area and associated haystack. The field boundary ditches continued into Area 2 where they eventually terminated. Late medieval and post-medieval activity at the site was represented by a few ditches identified in the S part of Area 1 and throughout Area 2. They created a rectilinear field system, possibly associated with the Red Barn, located immediately W of Area 1 and identified during the evaluation phase.

Malgorzata Kwiatkowska, Oxford Archaeology East, for Cranswick County Foods, plc

CHURCH RECORDING

Aldeburgh, Chapel Barn Farm (TM/4459; ADB 223 and ADB 005). Following previous geophysical survey, metal detecting and trial trench excavation in 2016, a small team returned in 2018 to conduct further excavation on the site which has marginal remains of the church of St Mary, Hazlewood. The aim was to confirm the location of the N wall of the church and the degree to which the line of the E-W walls was offset from true E-W coordinates. A 2m long N-S trench was cut on the approximate line of the N wall, as indicated by the geophysical survey. Careful profiling within the trench indicated the width of the N wall foundations as well as the extent to which this was centred below a true E-W line projecting from the N end of the residual W wall. This, in conjunction with the short length of residual W wall, has confirmed that the church building lay at an angle of approximately 4 degrees, counter-clockwise, from true NS-EW. Expert analysis of one of the metal-detected finds of the 2016 survey has confirmed that it is a gilded nummular brooch based on a coin of Louis the Pious.

Peter Howard-Dobson,
Aldeburgh and District Local History Society.

Bury St Edmunds, St Edmund's Abbey (TL/8564; BSE 010). Two recent pieces of work have been undertaken to further the work of the Abbey of St Edmund Heritage Partnership. This was formed in 2016 to bring together the major organisations that own land or have an interest in the abbey precinct, to work collaboratively on the care, conservation and enhancement of the abbey and to improve interpretation of the site. A Heritage Assessment by Dr Richard Hoggett (Richard Hoggett Heritage) was commissioned to bring together available historical and archaeological information about the abbey for the first time. It reviews the history of the area and assesses the known and potential archaeological remains and built heritage. A Conservation Plan led by Rowenna Wood (Purcell) assesses the significance of the abbey precinct and outlines a conservation framework and policies for its future care and enhancement. The projects were funded by Historic England and St Edmundsbury Borough Council. Information about the Heritage Partnership, reports of the recent conference and copies of the two reports can be found online at www.westsuffolk.gov.uk/visitors/Heritage/abbeyofstedmund.cfm and <https://stedscathedral.org/abbeyofstedmund/>.

Abby Antrobus, Suffolk County Council Archaeological Service,
writing on behalf of the Abbey of St Edmund Heritage Partnership.

Little Bealings, All Saints' Church (TM/2247; BEL 023). A programme of reordering work, including fitting of kitchen/café facilities, was carried out. Groundworks associated with this were monitored in order to record any archaeological deposits revealed, particularly during ground level reduction under the former pew bases. A small quantity of Late Saxon and early medieval pottery was recovered from an unstratified deposit but perhaps significantly, from the area of the N aisle which, until its addition in the 19th century, would have been outside of the medieval building. Other finds recovered were from disturbed, loose deposits likely to be associated with the Victorian restoration of the church. These were of post-medieval origin and included items such as coffin tacks, stained glass and roof-tiles linked to the church building or activities. The line of the former N wall was identified underlying the N arcade. A possible burial was cut by the arcade's E brick pier. This feature was orientated S-N rather than W-E with the skull visible in the S end, but was not excavated to confirm whether it was a grave so as not to unnecessarily disturb what lay below the required formation level. In the nave of the church, outcrops of solid chalk, faced clay and mortar may be the remnants of

earlier floor surfaces and other structural elements of the church, but none survived adequately to allow a confident interpretation.

Linzi Everett, Suffolk Archaeology CIC,
for Mullins Dowse Architects Ltd on behalf of the PCC.

Publication of these reports has been partly funded by Suffolk County Council.